



Intermodal freight transport solutions for the Polish market

Hupac Terminal Brwinów

Warsaw, 03.11.2020

**POLISH
SWISS
INNOVATION
DAY 2020**



HUPAC
moving together

Leading network operator in combined transport



1,024,089 road consignments

1,897,000 TEU

150 trains per day

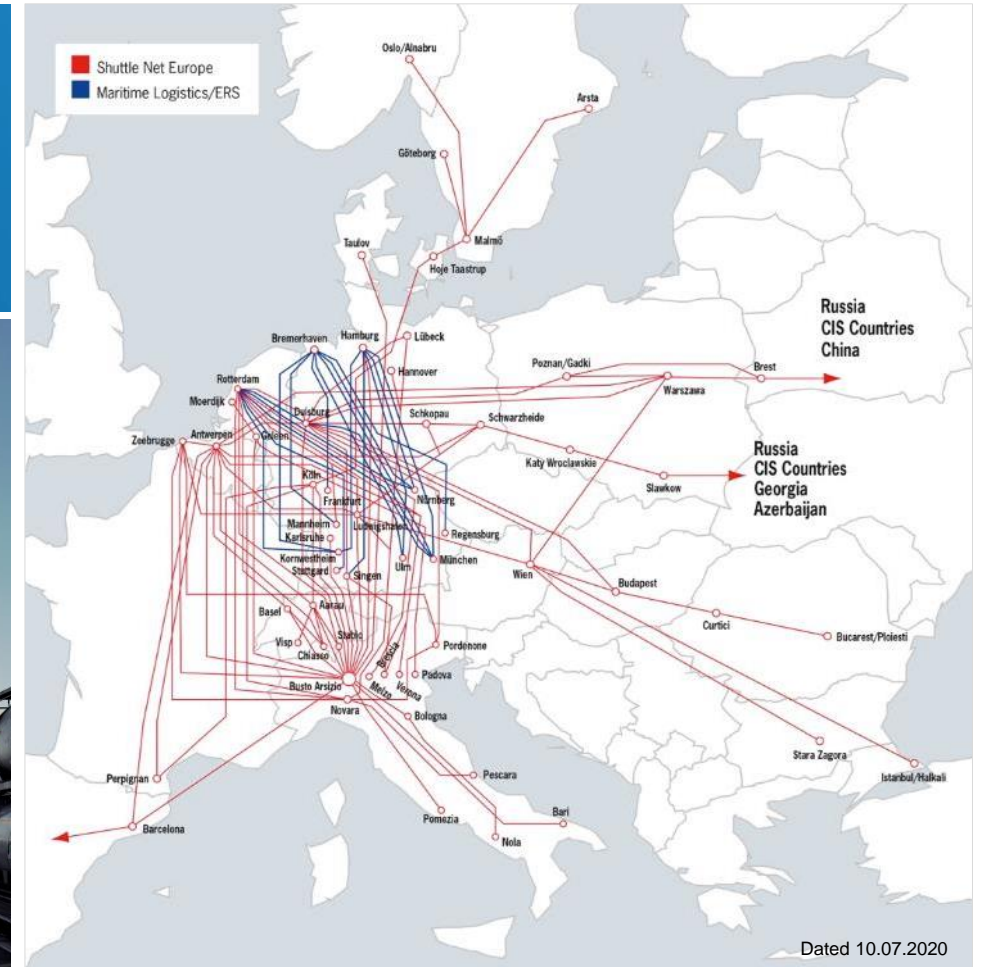
540 employees

7,300 rail platforms

100% low-noise wagon fleet

CHF 611 million turnover

EUR 549 million turnover

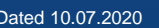


Hupac – pioneer in combined Alpine transit



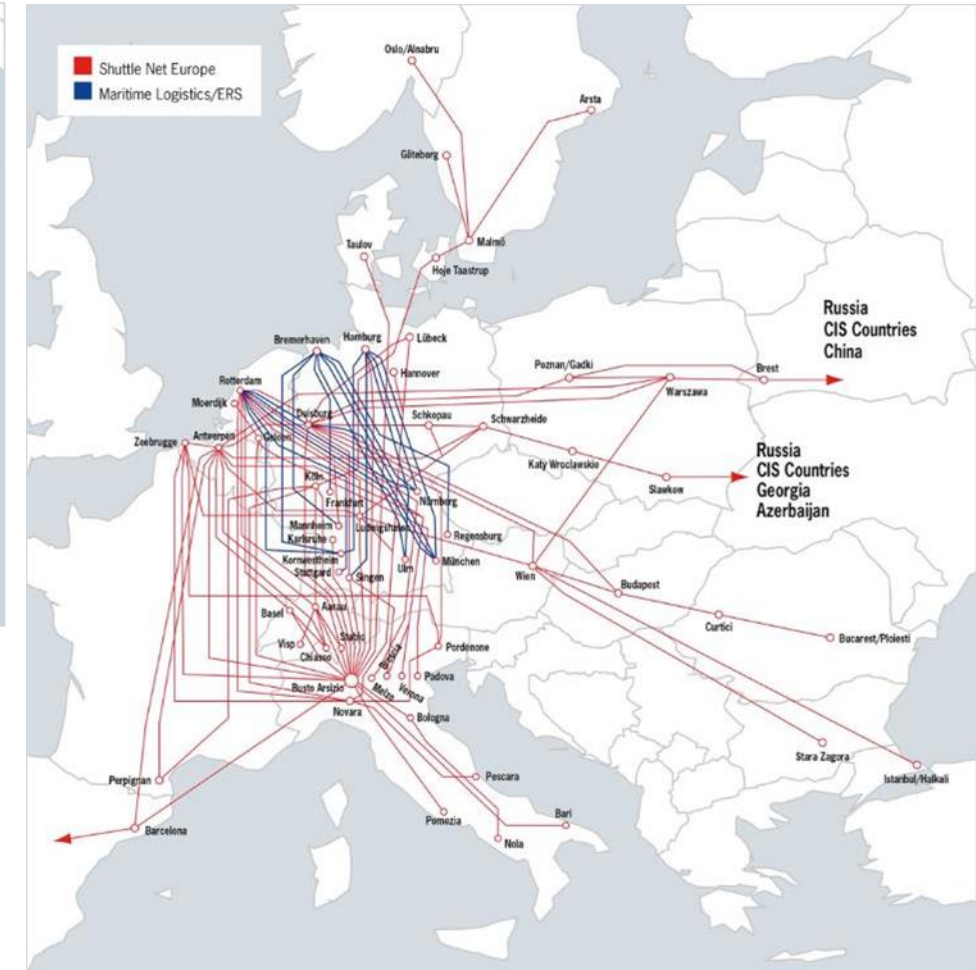
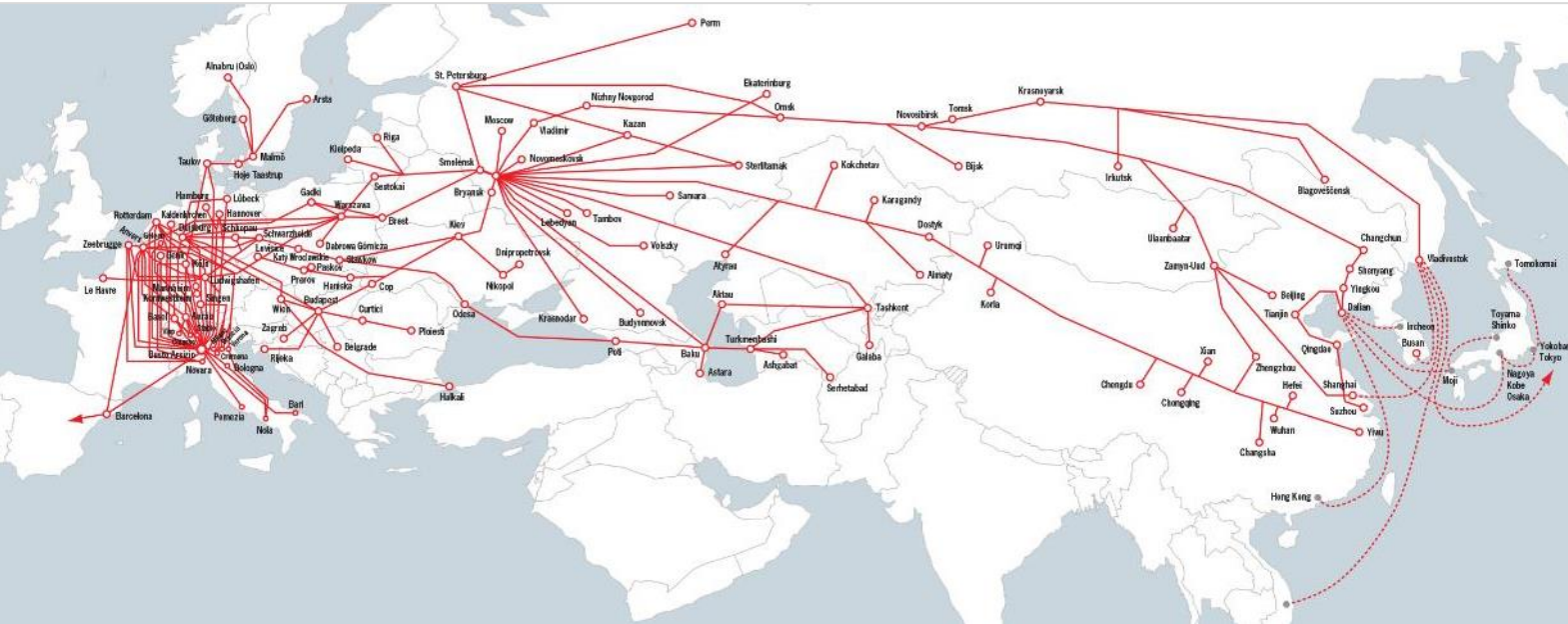
- Founded in Chiasso in 1967
- Founders: F.lli Bernasconi, Jacky Maeder, Danzas Chiasso, Bertschi and SBB
- Objective: to build up connections between Italy and Germany
- Capital: CHF 500,000
- First connection: Basel ⇌ Melide







We link China and Europe



- Own resources and local competence
- Cooperation with City Railway Platforms
- Poland as entrance gate to Europe
- Branch offices in Moscow and Shanghai

Terminals of the Hupac Group



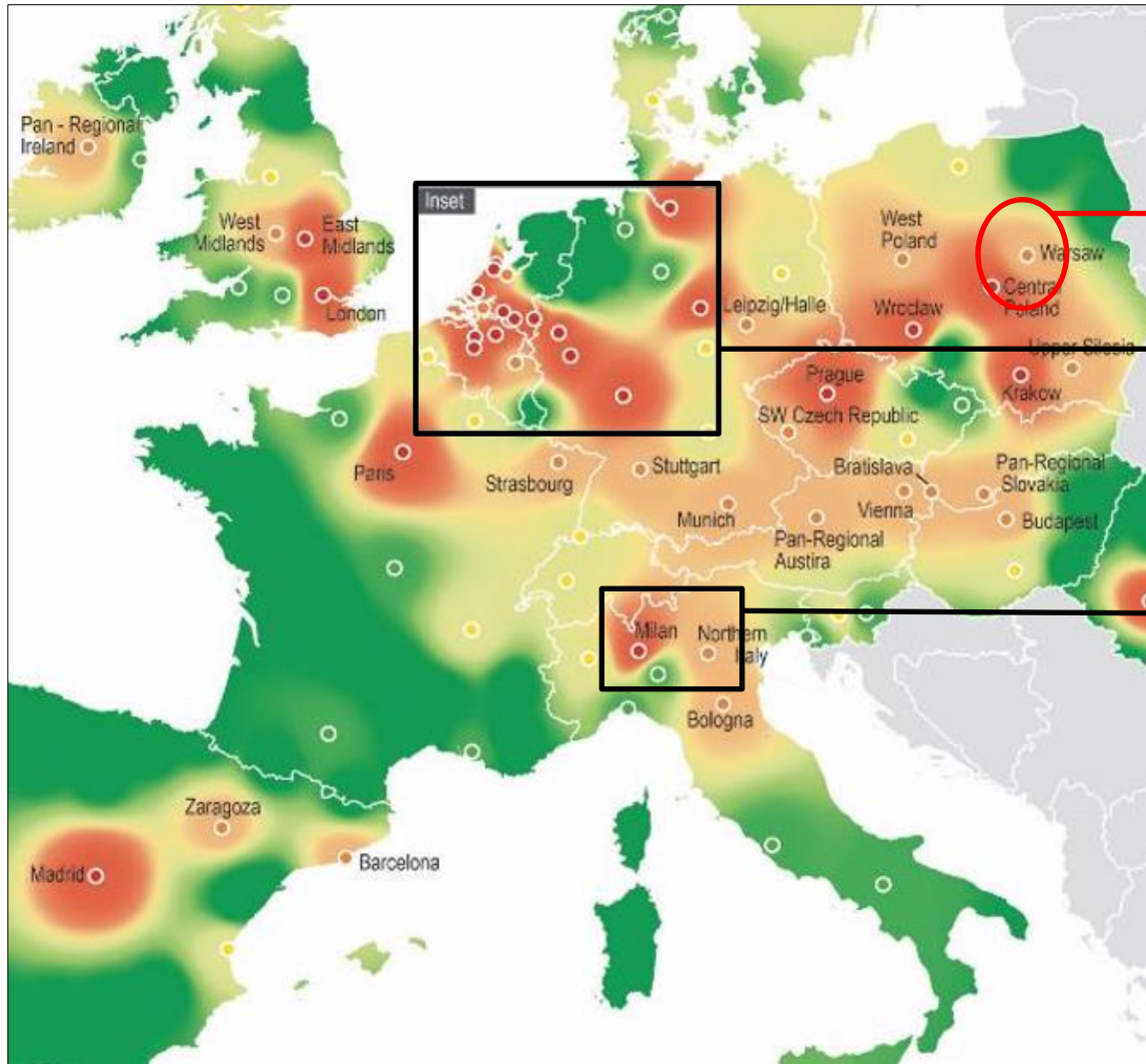
Efficiency and flexibility as key elements for reliable supply chains:

- > fast turnaround
- > flexible slot management
- > options for warehousing

Hupac continuously invests to overcome terminal bottlenecks

- Terminal management
- Minority participation
- Terminal projects

Hupac's presence in major regional Logistics Cluster



Coming soon: Brwinow

Rotterdam, Antwerp, Geleen,
Duisburg, Ludwigshafen

Busto/Gallarate, Novara,
Piacenza, Milano, Brescia,
Pordenone

Logistics Cluster: An agglomeration of distribution centers concentrated to serve local consumption and/or global trade routes. Often, logistics clusters operate irrespective of governmental boundaries. This means that a cluster might include multiple markets or metropolitan statistical areas.

The future is intermodal

UE's objective:
Transport > 300 km by rail or ship
2030 = 30%, 2050 = 50%

Intermodal transport

Safe and ecological transport system

The European intermodal network connects the main economic/logistics regions

Important investments at European level

Accelerator for economic development



Terminal Brwinów - Location

The Terminal Brwinów is located:

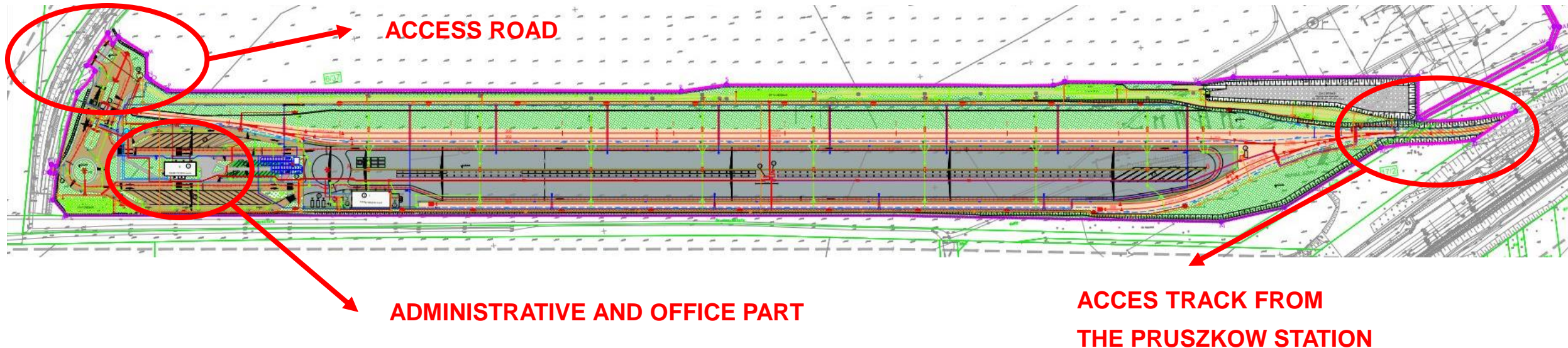
- 4 km from Pruszków exit and 90 km from Łódź North exit within A2 motorway
- 25 km west of Warsaw and 110 km east of Łódź
- 35 km east of the future location of the Central Communication Port (CPK)



Terminal plan and its technical parameters

Basic information about the Investment:

■ Area of the Investment	138 877 m ²
■ Area of the warehouse and storage yard	42 312 m ²
■ Area of the road system (internal roads)	10 154 m ²
■ Length of track system - 4 operating tracks 800 m long	3 835,69 mb
■ Administration building	597,6 m ²
■ Transhipment capacity	100 000 UTI

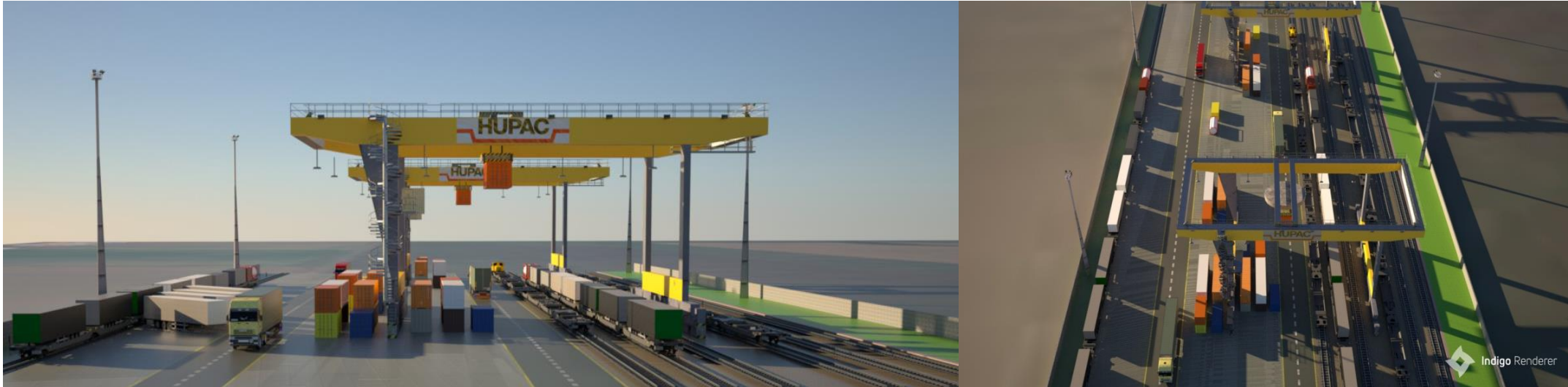


Terminal Brwinów – Phase I



- 5 railway tracks (2 transshipment + 2 support + 1 semi-track)
- 3 Reach stackers, 1 Tractor, 3 x OCR, Brake test system, 1 mobile tank)
- 4 - 5 train couples/day
- 2 shift/day operation
- Surface 300000 square meters
- Terminal 140000 square meters
- Logistic 160000 square meters
- **Start of activity (2021)**

Terminal Brwinów – Phase 2

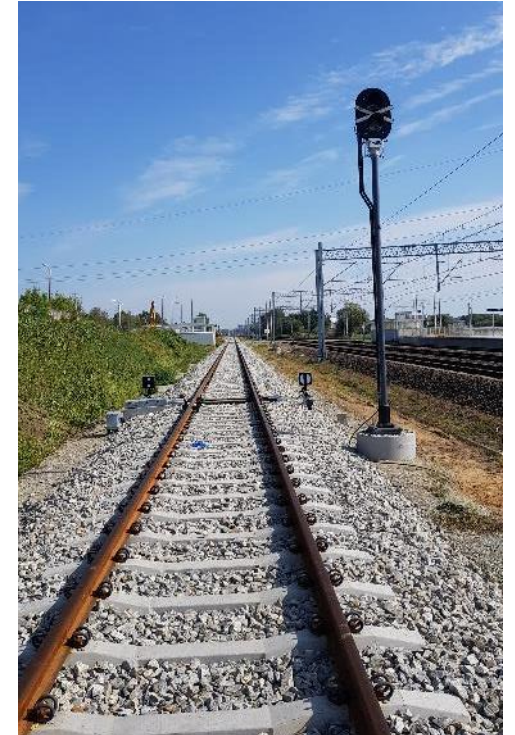


- 8 railway tracks (5 transshipment + 2 support + 1 semi track)
- 3 gantry cranes, 1 tractor, 3 x OCR, brake test system, 1 mobile tank)
- 10-12 train pairs/day
- 3-shift operation/day
- Start of activity - to be defined

Construction of a railway track (completed - 10.2019)

Information about the Investment:

- construction of tracks 201 and 207 with a total length of 1490 m
- reconstruction of power and teletechnical collisions
- construction of control-command and signalling equipment
- exchange of control applications at Pruszkow station



Construction of the access road to St. George Street (completed - 09.2018)

Information about the Investment:

- Road length 800 m
- Width of road 7,0 m
- Traffic category KR4 (1-6)
- Pedestrian and bicycle route
3,0 m wide
- Dehydration construction
- Construction of lighting
- Labelling





Thank you for your attention!

POLISH
SWISS
INNOVATION
DAY 2020



HUPAC
moving together